

# EASTERN FRONTIER ONLINE EQUIPMENT/VEHICLE AUCTION



DEC 13  
2024

BID ONLINE  
WED DEC 13

NO RESERVE!

TRUCKS  
TRAILERS  
MOVING VANS  
FARM EQUIPMENT  
LAWN EQUIPMENT  
SNOWBLOWERS  
CRUSHING &  
PULVERIZING  
HEAT PUMP  
& MORE!



## AUCTION

PEI



2016 International 4300 Roll-off Truck



## AUCTION

PEI



2008 Accord 30' Planter



## AUCTION

NB



2010 Mac 36' T/A Equipment Trailer



REGISTER TODAY: [easternfrontier.ca/auctions](http://easternfrontier.ca/auctions)

# AUCTION

NS



2001 International Navistar 4700 Van Truck



# AUCTION

NS



White 30" Walk-Behind Snowblower

# AUCTION

NS



Hardi SM50 Orchard Sprayer

# AUCTION

NS



Ryan Sod Cutter

# AUCTION

PEI



2012 Williams Hammermill Crusher & Pulverizer



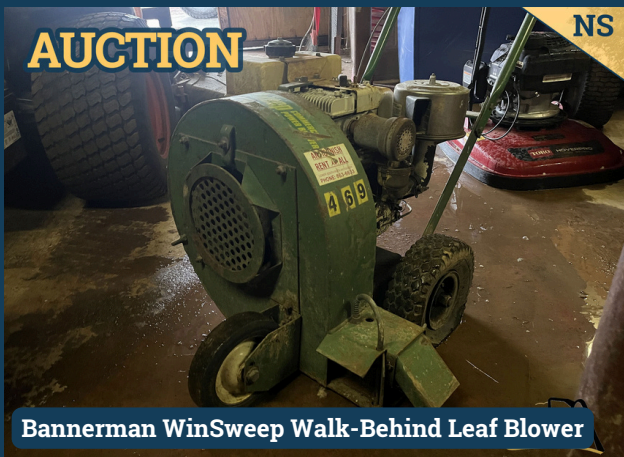
1999 BWS 36' T/A Air Tilt Top Float Trailer



2019 AERMEC Heat Pump



1990 Storage Van Trailer



Bannerman WinSweep Walk-Behind Leaf Blower



Millcreek 40" Aerator

REGISTER TODAY: [easternfrontier.ca/auctions](http://easternfrontier.ca/auctions)



# EASTERN FRONTIER AUCTIONS

# EQUIPMENT CATALOG

ATLANTIC CANADA - DEC 2024 - ALL PRICES CAD

**LATEST LISTINGS: CRUSHING/SCREENING • ASPHALT & PAVING  
EXCAVATORS • LOADERS • BACKHOES • DOZERS • DUMP TRUCKS  
FORESTRY • TRUCK TRACTORS • TRAILERS • SNOW EQUIPMENT & MORE**



## HUNDREDS OF THE LATEST LISTINGS INSIDE

Sell your equipment | Browse new listings: [EASTERNFRONTIER.CA](http://EASTERNFRONTIER.CA)



**LATEST LISTINGS: CRUSHING/SCREENING • ASPHALT & PAVING  
EXCAVATORS • LOADERS • BACKHOES • DOZERS • DUMP TRUCKS  
FORESTRY • TRUCK TRACTORS • TRAILERS • SNOW EQUIPMENT & MORE**



**2017 ADM RB250  
Portable Asphalt Plant**  
Asking \$1,950,000



**1992 Powerscreen MKII Screener**  
Asking \$45,000



**2010 Sparta Innovations  
Ship Loading Conveyor System**  
Asking \$500,000

# Financing Available

[sales@easternfrontier.ca](mailto:sales@easternfrontier.ca)

## AGGREGATE / CRUSHING & SCREENING

- 2017 ADM RB250 Portable Asphalt Plant (NL)
- 2013 Atlas Copco Diamec U4 Drill (NL)
- 2007 Boart Longyear LM55 UG Drill (NL)
- 2014 BWS PitPro 360 Portable Screener (NL)
- Cedarapids Crusher (NL)
- 1981 Cedarapids VA-VGF2236 Portable Jaw Crusher (NS)
- 2021 Difco Screening Bucket (NB)
- 2013 Ditch Witch JT30 Directional Drill (AB)
- 1977 Eagle Iron Works Wash Plant (NS)
- 2018 McCloskey C44 EW Cone Crusher (NL)
- 2015 McCloskey D15 Directional Drill (NL)
- 2017 Neuenhauser Starscreen Screening Plant (NB)
- 1992 Powerscreen MKII Screening Plant (NB)
- Rodrigue Metal PTO Wood Chipper (NB)
- 2010 Sparta Innovations Ship Loading Conveyor System (NB)
- 2015 Terex TBG640 Horizontal Grinder (PEI)
- 2007 Terex RS425C Wheel Soil Stabilizer (NL)
- Universal 880 Senior Jaw and Roll Conveyor (NB)
- 2012 Williams Hammermill Crusher/Pulverizer (PEI)

\*for DUMP TRUCKS, please see pg 9

\*for TRAILERS, please see pg 12-13



**2024 Bohringer B-120  
Concrete Batch Plant**  
Asking \$650,000



**2019 Bomag BW211D  
Smooth Drum Compactor**  
Asking \$120,000



**Blaw-Knox  
Road Widener**  
Asking \$38,500

## ASPHALT & PAVING / CONCRETE

- 2017 ADM RB250 Portable Asphalt Plant (NL)
- 2018 Ammann ARX26 Smooth Drum Compactor
- Blaw-Knox Road Widener (NS)
- 2024 Bohringer B-120 Concrete Batch Plant (ON)
- 2019 Bomag BW211D Smooth Drum Compactor (NB)
- 2014 CAT 140M VHP Plus Motor Grader (NS)
- 2004 CAT CB634D Double Drum Vibratory Roller (NL)
- 2015 Deere 772GP Motor Grader (NL)
- 1999 Dynapac CC122C Combination Compactor (NL)
- 1997 Dynapac CA151A Smooth Drum Compactor (NL)
- 2002 Gomaco GT3300 Curb & Gutter Machine (NS)
- 2008 Ingersoll Rand SD122D Smooth Drum Compactor (2 in NL)
- 2008 Ingersoll Rand DD90HF Smooth Drum Compactor (NL)
- 2005 Ingersoll Rand DD34HF Smooth Drum Compactor (NL)
- 2014 International Navistar Tack Distributor Truck (PEI)
- 1996 International Paystar 5000 Twinsteer Mixer Truck (NS)
- 2007 LeeBoy L8515T Paver (NB)
- 2006 Mack MR688S Concrete Pump Truck (NS)
- Salsco TP411 Track Paver (NL)
- 2015 Simex ST200 Asphalt Layer (NB)
- 2006 Terex/Cedarapids 452 Paver (NB)
- 2007 Volvo VHD Twinsteer Mixer Truck (ON)
- 2004 Volvo VHD Twinsteer Mixer Truck (ON)
- 1999 WRT 120SE35 Portable Asphalt Plant (QC)

New listings are added daily. If you're looking for something not listed here, call Lonnie toll-free at 866-500-1196!

### NEW LISTINGS EVERY DAY!

Visit our  
website to see  
the latest



**2023 Volvo EC160EL Hydraulic Excavator**  
Asking \$235,000



**2012 Case CX250C Long Reach Excavator**  
Asking \$180,000



**2022 JCB 8029 CTS Mini Hydraulic Excavator**  
Asking \$64,500

## EXCAVATORS

- 2012 Case CX250C Long Reach (PEI)
- 2017 CAT 323FL (NL)
- 2016 CAT 323FL (NL)
- 2014 CAT 336EL (NL)
- 2014 CAT 336E (NL)
- 2006 CAT 345CL (NS)
- 2005 CAT 307C (NL)
- 2004 CAT 325C (NB)
- 1999 CAT 320BL (NL)
- 2024 Deere 75P Mini (ON)
- 2023 Deere 135G (NB)
- 2017 Deere 50G Mini (NB)
- 2014 Deere 160G LC (NL)
- 2008 Deere 450D LC (NB)
- 2007 Deere 210C W (NB)
- 2016 Doosan DX225 LC-3 (NB)
- 2019 Hitachi ZX180 LC-6N (NS)
- 2012 Hitachi ZX200 LC-3 (NL)
- 2008 Hitachi 200 LC-3 (BC)
- 2018 Hyundai HW180 Wheel Excavator (QC)
- 2022 JCB 8029CTS Mini (NL)
- 2014 Komatsu PC210 LC-10 (NB)
- 2006 Komatsu PC600 LC-8 (NS)
- 2022 Takeuchi TB250-2 Midi (NL)
- 2023 Volvo EC160 EL (NB)
- 2017 Volvo ECR145 EL (NS)
- 2006 Volvo EC460B LC (NL)

+ Various attachments,  
call or visit [easternfrontier.ca](http://easternfrontier.ca)  
for details

# CALL FOR PRICING

(866) 500-1196



**2011 CAT 140M AWD**

**Motor Grader**

Asking \$105,000



**2019 CAT 906M Wheel Loader**

Asking \$44,000



**1995 CAT D8N**

**Crawler Dozer**

Asking \$160,000

## MOTOR GRADERS

2014 CAT 140M VHP Plus (NS)

2011 CAT 140M (NL)

2015 Deere 772GP (NL)

+ Various attachments,  
call or visit [easternfrontier.ca](http://easternfrontier.ca)  
for details

## LOADER BACKHOES

2003 CAT 420D (NB)

## WHEEL LOADERS

2019 CAT 906M (NB)

2013 CAT 950H (NL)

1987 CAT 966D (NS)

1985 CAT 926 (PEI)

1984 Clark 175C (NB)

1980 Clark 275B (NB)

2022 Deere 624P (NL)

2012 Deere 624K (NL)

2005 Deere 744J (NL)

2007 Doosan DL300 (NB)

2017 Hitachi ZW140-5B (NL)

2018 Hyundai HL965 (NS)

2020 Komatsu WA270-8 (NL)

1992 Komatsu WA250-1 (NL)

2017 Kubota M7-171H (NL)

2015 Liebherr L542 (NB)

2014 Liebherr L550 (NL)

Terex Hanomag 55C (NS)

1993 Volvo L50 (NS)

## DOZERS

2011 CAT D6T XL (NL)

2004 CAT D5G XL (NB)

2004 CAT D4G XL (NB)

2002 CAT D4G LGP (NL)

2003 Deere 650H LT (NB)

1982 Deere 350C (NL)

Deere 850J/Roto Slasher (NL)

2015 Komatsu D65EX-17 (NL)

2009 Komatsu D39EX-21 (NB)

1992 Komatsu D37P-2 (NL)

## SKID STEER LOADERS

2006 Bobcat MT50 (NB)

2012 CAT 279C2 (NL)

2007 CAT 272C (NL)

2013 Deere 318D (PEI)

1999 Thomas 245 HDK (NB)

## JOB SITE BUILDINGS

Creations 1-Room Structure (2 in NS)

2012 GNS Portable 47-Person Industrial Trailer Camp (NL)





SALES@EASTERNFRONTIER.CA TEL. (866) 500-1196



**2016 John Deere 1910E  
Forwarder**  
Asking \$220,000



**1998 Timberjack 1010B  
Logging Skidder**  
\$50,000



**2016 BWS 46' Quad-Axle  
Log Trailer**  
Asking \$52,000

## FORESTRY EQUIPMENT

- Bobcat SG60 Stump Grinder (PEI)
- 2016 Deere 2154D Harvester (NL)
- 2016 Deere 1910E Forwarder (NB)
- 2014 Deere 1910E Forwarder (2 in NL)
- 2013 Deere 2154D Harvester (NL)
- 2005 Direct FB-257 Feller Buncher (NS)
- FAE Mulching Heads (2 in NL)
- Forano SB-322 L Debarker (NL)
- 2021 Hakkipilke Falcon 35 Firewood Processor (NS)
- Hawker Siddeley C6D Skidder (2 in NL)
- 2017 Landrich LR-HV Harvester (NB)
- 2015 Power Traxx 10S-HF Flatdeck Muskeg (NL)
- 1999 Pro Pac 600 Towable Wood Slasher (NB)
- 2023 Raytree REDM50 Excavator Mulcher (NB)
- 2014 Rotobec Elite Log Loader (NB)
- 2015 Terex TBG640 Horizontal Grinder (PEI)
- 1998 Timberjack 1010B Skidder (PEI)
- 1983 Tree Farmer C6D Cable Skidder (NB)
- 2016 Waratah 616 Harvester Head (NL)
- 2006 Waratah HTH622B Harvester Head (NB)

## LOGGING TRAILERS

- 2016 BWS 46' Q/A
- 2014 Deloupe 51' Q/A (NB)
- 2011 Manac 48' Q/A (PEI)
- 2011 Manac 53' Tri/A Walking Floor Chipper Trailer (PEI)
- 2021 Temisko 49' Q/A (NB)
- 2018 Temisko 49' Q/A (NB)

For other trailers, please see pg 12-13

LOOKING FOR SOMETHING ELSE? WE CAN SOURCE NEARLY ANYTHING.  
CALL LONNIE 866-500-1196 or email SALES@EASTERNFRONTIER.CA



**1993 Freightliner FLA Cab-Over Sleeper Truck**  
\$80,000



**2025 Kenworth W990 Sleeper Truck**  
\$255,000



**2019 Kenworth W900L Sleeper Truck**  
Asking \$100,000

## TRUCK TRACTORS

- 2016 Freightliner 122SD T/A Sleeper (NB)
- 2016 Freightliner Cascadia 125 T/A Day Cab (NS)
- 2014 Freightliner Columbia 120 T/A Sleeper (PEI)
- 2010 Freightliner Cascadia T/A Sleeper (NB)
- 1993 Freightliner FLA Cab-Over Sleeper (NS)
- 2017 International ProStar 122 T/A Day Cab (NS)
- 2013 International Durastar 4300 Flatbed Rolloff (NL)
- 2007 International 9400 Eagle T/A Sleeper (PEI)
- 2006 International 9900i T/A Sleeper (NL)
- 1999 International 2674 T/A Hooklift (NS)
- 2025 Kenworth W990 T/A Sleeper (NB)
- 2019 Kenworth W900L T/A Sleeper (NS)
- 2016 Kenworth W900L T/A Sleeper (NS)
- 2016 Kenworth T880 T/A Sleeper (NB)
- 2015 Kenworth W900 T/A Sleeper (NL)
- 1999 Kenworth C550 Tandem Tandem Bed Truck (NB)
- 2016 Mack CXU613 T/A Sleeper (NL)
- 2012 Mack CXU613 T/A Day Cab (PEI)
- 2011 Mack CXU613 T/A Sleeper (PEI)
- 1980 Pacific Tandem Tandem Bed Truck (NB)
- 2021 Peterbilt 389 T/A Sleeper (NS)
- 2020 Peterbilt 389 T/A Sleeper (2 in NS)
- 2013 Peterbilt 386 T/A Day Cab (PEI)
- 2013 Peterbilt 386 T/A Sleeper + Parts Truck (NL)
- 2004 Sterling L9500 T/A Day Cab (NB)
- 2013 Volvo VNL T/A Sleeper (NL)
- 2022 Western Star 4900EX Sleeper (NS)
- 2015 Western Star 4900EX Sleeper (NS)
- 2014 Western Star 4900EX Sleeper (NS)
- 2013 Western Star 4900SA T/A Sleeper (NS)
- 2013 Western Star 4900SB T/A Sleeper (NL)
- 2012 Western Star 4900 T/A Day Cab (NS)
- 2006 Western Star 4900 T/A Sleeper (NL)

FOR PRICING, call 866-500-1196 or visit [EASTERNFRONTIER.CA](http://EASTERNFRONTIER.CA)

**FINANCING  
AVAILABLE**

**Call or email  
for more info**



**2013 Western Star 4700SB**  
**Plow/Spreader Truck**  
Asking \$130,000

## DUMP TRUCKS

- 2002 CAT 777D Rock Truck (NS)
- 2012 Doosan DA30 Articulating Dump Truck (NB)
- 2000 Ford F450 SD Dump Truck (NB)
- 2013 Freightliner 114SD T/A (NL)
- 2004 GMC Topkick C7500 S/A (NL)
- 2019 International HX620 Dump/Plow/Spreader Truck (NB)
- 2004 International 7400 S/A (NS)
- 1995 Mack RB688S T/A (NL)
- 1989 Mack DM690S T/A (2 in NL)
- 1986 Mack DM686S T/A (NL)



**2017 Isuzu NPR HD / SuperVac**  
**GaleForce Vacuum Truck**  
Asking \$98,500

## PLOW & SPREADER TRUCKS

- 2016 Dodge Ram 2500 4X4 (PEI)
- 2009 Freightliner M2 112 T/A (NB)
- 1997 Volvo WG42 S/A (NB)
- 2013 Western Star 4700SB (NL)

## MORE SNOW EQUIPMENT

- 2005 Holder C978H Sidewalk Snow Blower (QC)
- 2002 Snocrete 8' Snow Blower Attachment (NL)
- Loader-Mount Snow Blower Attachment (PEI)
- Victory SP-220 86" Front Mount Snow Plow (NB)
- 1996 Horst SSB96 Side Discharge Sand Bucket (PEI)



**2006 Mack MR688S**  
**Concrete Pump Truck**  
Asking \$119,000

**CALL FOR PRICING**  
**(866) 500-1196**



**2014 Liebherr L550  
Loader/Forklift**  
Asking \$74,900



**2006 Freightliner M2 106 / National  
N65A Boom Truck**  
\$46,500



**2001 Sterling Lift Truck /  
2015 UniLift TAL57000C**  
Asking \$65,000

### CRANES & LIFTS

- 2013 Genie GS5390RT Scissor Lift (NL)
- 2009 Grove RT880E Rough Terrain Crane (NB)
- 2012 HIAB 225K-3 HIPRO Loader Crane (PEI)
- 2018 Hydro Mobile F300 Mast Climbing Work Platforms (NL)
- 2014 JCB 550-170 Telehandler (NB)
- 2013 JLG 600AJ Articulating Boom Lift (NL)
- 2009 Klimer K Line Twin Mast Work Platform (NB)
- 2014 Liebherr L550 Loader/Forklift (NL)

### BOOM TRUCKS / BUCKET TRUCKS

- 2009 Altec DM45TR Digger Derrick (NB)
- 2006 Freightliner M2 106 / National N65A (NB)
- 1999 Freightliner FL112 / Pioneer 30t Boom Truck (NL)
- 2008 International Durastar 4400 / Posi-Plus 400-46A (PEI)
- 2007 International Durastar 4300 / Altec Digger Derrick (NL)
- 2004 International Durastar 4400 / Posi-Plus 194-42C (NB)
- 2004 International 7600 Boom Truck (NL)
- 2006 Sterling L90 / HIAB 300-5 (NL)
- 2001 Sterling Lift Truck / 2015 UniLift TAL57000C (PEI)

### OTHER VEHICLES

- 2006 Chevy Express Van Truck (NL)
- 2017 Dodge Ram 3500HD Flatbed Truck (NS)
- 2012 Dodge Ram 5500HD Hooklift Rolloff (NL)
- 2020 Fat Truck 2.8C Off-Road Amphibious Vehicle (NL)
- 2018 Ford E450 Econoline Super Duty Van Truck (NL)
- 2013 Ford F350 4x4 Service Truck (NB)
- 2006 Ford F350 Mechanics Truck (PEI)
- 2017 Freightliner FM2 Rolloff Truck (PEI)
- 2006 GMC 3500 Flatbed Utility Truck (NB)
- 2000 GMC C7500 Flatbed Fuel Truck (NL)
- 2010 Hino 185 Box Truck (NS)
- 2014 International Navistar Tack Distributor Truck (PEI)
- 2014 International 7400 Packer Garbage Truck (NB)
- 2013 International Durastar 4300 Utility Dump Truck (NB)
- 2009 International Durastar 4300 Reefer Truck (NL)
- 2009 International Navistar 4100 Flatbed Truck (NL)
- 2007 International 4400 Roll-Back Tow Truck (NS)
- 2005 International 4300 Water Truck (NL)
- 1997 International 4700 Water Truck (NL)
- 2017 Isuzu NPR HD / SuperVac Gale Force Vacuum Truck (NL)
- 2017 KCP Concrete Pumper Truck (NB)
- 1950 Mercury Pickup Truck (NB)
- 1997 Rosenbauer HME Fire Truck (NB)

\*for DUMP TRUCKS, see pg 9  
\*for TRUCK TRACTORS, pg 11



**2023 Load Trail Tri/A  
Gooseneck Trailer**  
Asking \$29,000



**2000 Larochele 27' T/A  
End Dump Trailer**  
Asking \$17,500



**2010 ABS RC231 T/A  
Live Bottom Trailer**  
Asking \$48,500

## TRAILERS

- 2010 ABS RC231 30' T/A Live Bottom Trailer (NL)
- 1987 Arne's 50-Ton Tri/A Scissor Neck Lowboy Trailer (NS)
- 2021 Big Tex 14LP Heavy Duty T/A Dump Trailer (NL)
- 2007 BWS 50-Ton Scissor Neck Float Trailer (NB)
- 1991 BWS Cable Reel Trailers (2 in NB)
- 1989 Cobra 27' T/A End Dump Trailer (NB)
- 1987 Cobra 30' Tri/A Semi Dump Trailer (NL)
- 1998 Craig TA20 T/A Tag Equipment Trailer (PEI)
- 1998 Etnyre 26' Tri/A Lowboy Trailer (NB)
- 2023 Gincor 53' Tri/A Drop Deck Trailer (3 in NL)
- 2007 Great Dane 53' T/A Reefer Trailer (PEI)
- 2005 Great Dane 53' T/A Reefer Trailer (PEI)
- 1998 JC Trailers 10-ton T/A Tag Trailer (NB)
- 2015 JM Chantal PT24-3E Roll-off Trailer (NS)
- 2000 Larochele 27' T/A End Dump Trailer (NB)
- 2023 Load Trail Tri/A Gooseneck Trailer (PEI)
- 2013 Load Trail Heavy Duty T/A Dump Trailer (PEI)
- 1987 Lode King 40' Tri/A Lowboy Trailer (PEI)
- 2020 LWL 20' T/A Tilt Deck Trailer (NB)
- 2022 Manac 53' Tri/A Highboy Trailer (NL)
- 2022 Manac B-Train Highboy Trailer (NL)
- 1988 Manac 48' Tri/A Flatbed Trailer (NS)
- 2009 Max Atlas Tri/A Container Chassis (PEI)
- 2007 Max Atlas 48' Tri/A Container Chassis (PEI)
- 2005 Max Atlas Tri/A Container Chassis (2 in PEI)
- 2004 Max Atlas Tri/A Container Chassis (2 in PEI)
- 2003 Max Atlas Tri/A Container Chassis (2 in PEI)
- 1993 Max Atlas 48' T/A Container Chassis (PEI)

see more trailers on next page...  
for LOGGING trailers, see the Forestry section, pg. 8



[SALES@EASTERNFRONTIER.CA](mailto:SALES@EASTERNFRONTIER.CA)

TEL. (866) 500-1196



**2018 Temisko 49' Q/A Log Trailer**  
Asking \$33,000



**2013 Load Trail Heavy Duty T/A Dump Trailer**  
Asking \$20,000



**Loader-Mount Snow Blower**  
Asking \$22,000

### MORE TRAILERS

- 2022 Maxi-Roule Cobra T/A Gooseneck Trailer (NL)
- 1998 Mond 48' Tri/A Container Chassis (PEI)
- 1996 Raglan 37' Tri/A End Dump Trailer (NB)
- 2005 Scheltema Tri/A Detachable Lowboy (NS)
- 2017 Snake River Gooseneck Trailer (NL)
- 2005 Stoughton 48' Tri/A Container Chassis (PEI)
- 2008 Titan 48' Q/A Walking Floor Trailer (PEI)
- 2009 Trail King 30' T/A Live Bottom Trailer (NL)
- 2010 Transcraft Eagle 48' Tri/A Highboy Trailer (NB)
- 2020 Trout River 48' Q/A Live Bottom Trailer (NL)
- 2020 Trout River 39' Tri/A Live Bottom Trailer (NL)
- 2010 Trout River 39' Tri/A Live Bottom Trailer (PEI)
- 2009 Trout River 39' Tri/A Live Bottom Trailer (NS)
- 2009 Trout River 39' Tri/A Live Bottom Trailer (PEI)
- 2007 Trout River 39' Tri/A Live Bottom Trailer (PEI)

### ATTACHMENTS

- Unused 2022 72" Brush Rake Attachment (NB)
- Unused 2022 Bobcat 84" Blade (NB)
- 2021 Difco Screening Bucket (NB)
- FAE Mulching Heads (2 in NL)
- 2012 Allied AMS-30 Hydraulic Rotational Shear (NL)
- 1996 Horst SSB96 Side Discharge Sand Bucket (PEI)
- 55' Long Reach Boom/Stick
- Long Reach Boom/Stick Assembly (NL)
- Martach C15000NH Winch Attachment (PEI)
- Quick Attach 86" Sweeper Broom Attachment (NB)
- 2023 Raytree REDM50 Excavator Mulcher (NB)
- 2020 Topa T-1600N Hydraulic Hammer (NL)
- Victory SP-220 86" Front Mount Snow Plow

**FINANCING AVAILABLE**

**Call or email for more info**



PLEASE CALL FOR PRICING & MORE INFO

TEL. (866) 500-1196



**2009 Pottinger SERVO 6.50 Nova Plus 6 Furrow Plough**  
Asking \$19,500



**1998 Valmar 500 Pull-Type Fertilizer Spreader**  
Asking \$8,000



**2010 AB Skid Mounted Generator**  
Asking \$110,000

### AGRICULTURE EQUIPMENT

- 2022 72" Brush Rake Attachment (NB)
- 2001 Asa Lift SP200 Carrot Harvester (PEI)
- Bobcat SG60 Stump Grinder (PEI)
- 2009 Flottweg High Performance Decanter (PEI)
- 1950 Ford 871 2WD Tractor (NB)
- 2018 Moro Aratri MVP 26A Warrior Plough (NS)
- 2009 Pottinger SERVO 6.50 Nova Plus 6 Furrow Plough (NS)
- 2023 Raytree REDM50 Excavator Mulcher (NB)
- Rodrigue Metal PTO Wood Chipper (NB)
- Seed Conveyor (NB)
- 2012 Struik 4-Row Power Hiller (PEI)
- Tardiff TV1118 Land Leveller (NL)
- 1998 Valmar 500 Pull-Type Fertilizer Spreader (PEI)

### OTHER EQUIPMENT

- 24" Track Pads to fit Volvo 160 Excavator (NB)
- 31" Tracks to fit CAT 320 (NL)
- Melroe Ingersoll Rand LT304 Trencher (PEI)
- 2010 AB Skid Mounted Generator (NL)
- 2006 Bomar 820 Extended Horizontal Band Saw (QC)
- 1998 Generac 100kW Generator (NB)
- Onan 15JC 15.0 Propane Gas Generator (NB)
- 2005 Ingersoll Rand SSR-HP400 Compressor (NS)
- Blue Giant HA6008-50 Dock Levellers (NB)
- 2015 Dragflow HY35A Dredge Pump (NS)
- 2020 Topa T-1600N Hydraulic Hammer (NL)
- 2013 Ditch Witch JT30 Directional Drill (AB)
- 2015 McCloskey D15 Directional Drill (NL)
- 2013 Atlas Copco Diamec U4 Drill (NL)
- 2007 Boart Longyear LM55 UG Drill (NL)
- 2009 Vincent 2-Level Press (PEI)

## CALL FOR PRICING

## (866) 500-1196



### LISTING SPOTLIGHT: 2017 ADM RB250 ASPHALT PLANT

Complete to generators, quad-axle portability with hydraulic legs, 10x20' control room

- RB250 Wet Plant, quad-axle air portability with hydraulic legs
- 10'x20' Control Room, reverse weigh, auto damper, MCC in Control Room
- 4CFB20 Bins, tri-axle, adjustable legs with full length sand shoes, bulkhead with wing walls, 4 bun vibrators, 4 no flow switches, tach feed back
- Weigh conveyor, 24" belt and pintow hitch, 3'x8' screen
- Electric cone heat, electric gate heat, DC300, chrome, grease bank, tri-axle, 15 HP air compressor
- 30000g HOH tank, polymer agitation system, tri-axle, adjustable legs with full length sand shoes, 4" transfer pump, hose package, 4" of insulation jacketed fill line
- List of upgrades and special items upon request
- 2016 C18 Genset (545kw @ 600V), 2020 D60 genset generators

Very good condition, still in operation. Will be dismantled, cleaned and ready for shipping.

Located in Newfoundland. See more pics at [www.easternfrontier.ca](http://www.easternfrontier.ca)



Asking \$1,950,000 CAD

Please call Harold at 709-690-4485 or email [sales@easternfrontier.ca](mailto:sales@easternfrontier.ca) for more information.





# SHIPPING ASSETS



## HOW EASTERN FRONTIER CAN HELP

Eastern Frontier does not directly provide shipping services. However, we can recommend vetted companies familiar with our location, terrain, and our expectation to make every transaction as smooth as possible. Whether shipping regionally, nationally, or internationally, they are familiar with the process and have the answers to your questions. For our international customers please note the Custom Broker Service section on this page, where you can find selected companies that will look after all the paperwork required for US border crossings. For a quote, request the following information below from our sales team, which will get you one step further towards having your purchase in your possession as quickly as possible.

## INFORMATION FOR THE SHIPPING COMPANY

- Origin (include city/country/area code);
- Destination (include city/country/area code);
- Pick-up date (including whether an appointment is needed to pick up or deliver, hours of operation);
- Type of equipment (ex., dry van, refrigerated, flatbed, RGN, etc.);
- Commodity type;
- Approximate weight and volume.

Questions? Your EFA sales rep has answers.

**FINANCING AVAILABLE**

email [sales@easternfrontier.ca](mailto:sales@easternfrontier.ca) for info

## Trustworthy Shippers

### NEWFOUNDLAND

Riverbend Transportation  
709-427-5570  
Double G Trucking Ltd.  
709-632-8183  
Anytime Heavy Haul  
709-685-3003

### NOVA SCOTIA

JNB Heavy Haul  
902-221-0903  
S & M Trucking  
902-567-1466  
Atlantic Tiltload Ltd.  
902-468-9438

### NEW BRUNSWICK

Atlantic Pacific Transport  
800-561-0049

### PEI

Griffen Towing  
902-629-0747

### USA

Reed TMS Logistics  
786-310-2007 ext. 2108  
Great Lake Logistics  
519-330-2850

### MARINE FLEET

Oceanex 888-875-9595

## US Custom Broker Services

Southbound Shipments  
[dleye@mantoria.com](mailto:dleye@mantoria.com)  
514-488-4004 ext.317

Eric Young  
Licensed Custom Broker  
518-314-0224

Border Buddy ([borderbuddy.com](http://borderbuddy.com))  
855-275-1100



**EASTERN  
FRONTIER  
AUCTIONS**

**EQUIPMENT FOR SALE**

ATLANTIC CANADA - DEC 2024 - ALL PRICES CAD

**NEW LISTING SPOTLIGHT: 47-PERSON INDUSTRIAL TRAILER CAMP**

**2012 G.N.S. INDUSTRIAL TRAILER SERVICES**

47-person work site trailer camp.

Includes:

8 units, 12' x 56'. See main floor plan below.

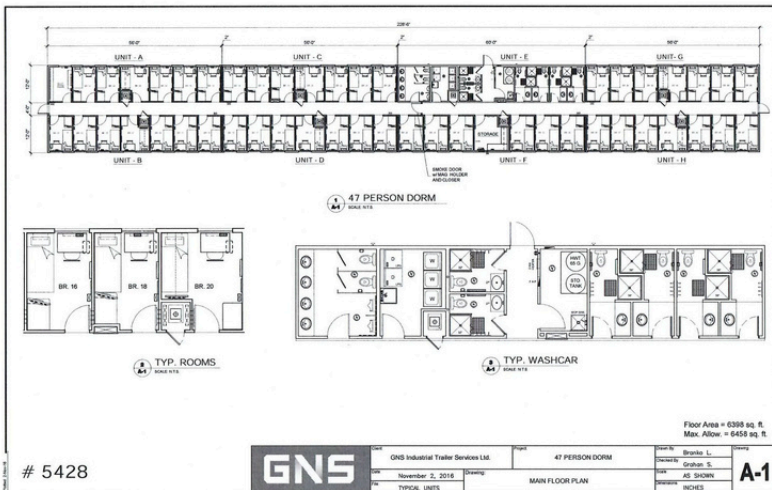
6 rooms per trailer unit.

Laundry facilities and washrooms in each unit.

Located in Newfoundland, ready to ship.

MORE INFO: call Lonnie at 866-500-1196 or email [sales@easternfrontier.ca](mailto:sales@easternfrontier.ca)

Asking \$625,000 CAD



**For details, offers and more,  
contact Eastern Frontier:**

Harold Druken (Newfoundland & Labrador)

709-690-4485

[hdruken@easternfrontier.ca](mailto:hdruken@easternfrontier.ca)

Jody Smallman (Nova Scotia / New Brunswick)

902-890-9694

[jsmallman@easternfrontier.ca](mailto:jsmallman@easternfrontier.ca)

Lonnie Thompson (Prince Edward Island)

902-393-6196

[lthompson@easternfrontier.ca](mailto:lthompson@easternfrontier.ca)



**NEXT AUCTION:**  
**DEC 13!**



**CANADA'S HEAVY EQUIPMENT SPECIALISTS**



**NEWFOUNDLAND  
& LABRADOR**

John Adams  
President / CEO  
jadams@easternfrontier.ca



**NEWFOUNDLAND  
& LABRADOR**

Harold Druken  
VP Sales  
709-690-4485  
hdruken@easternfrontier.ca



**NOVA SCOTIA &  
NEW BRUNSWICK**

Jody Smallman  
902-890-9694  
jsmallman@easternfrontier.ca



**PRINCE EDWARD  
ISLAND**

Lonnie Thompson  
902-393-6196  
lthompson@easternfrontier.ca



**WESTERN CANADA**

Bill Carew  
587-989-6466  
bcarew@easternfrontier.ca



**WESTERN CANADA**

Ashley Mackenzie  
780-399-8218  
amackenzie@easternfrontier.ca

**EASTERNFRONTIER.CA**