



EASTERN FRONTIER AUCTIONS

EQUIPMENT CATALOG

ATLANTIC CANADA - MAR 2025 - ALL PRICES CAD

**LATEST LISTINGS: CRUSHING/SCREENING • ASPHALT & PAVING
EXCAVATORS • LOADERS • BACKHOES • DOZERS • DUMP TRUCKS
FORESTRY • TRUCK TRACTORS • TRAILERS • SNOW EQUIPMENT & MORE**



HUNDREDS OF THE LATEST LISTINGS INSIDE

Sell your equipment | Browse new listings: EASTERNFRONTIER.CA



**LATEST LISTINGS: CRUSHING/SCREENING • ASPHALT & PAVING
EXCAVATORS • LOADERS • BACKHOES • DOZERS • DUMP TRUCKS
FORESTRY • TRUCK TRACTORS • TRAILERS • SNOW EQUIPMENT & MORE**



**2017 ADM RB250
Portable Asphalt Plant**
Asking \$1,950,000



**2017 Neuenhauser Starscreen
Screening Plant**
Asking \$325,000



**2010 Sparta Innovations
Ship Loading Conveyor System**
Asking \$500,000

**Financing
Available**
sales@easternfrontier.ca

AGGREGATE / CRUSHING & SCREENING

- 2017 ADM RB250 Portable Asphalt Plant (NL)
- 2013 Atlas Copco Diamec U4 Drill (NL)
- 2007 Boart Longyear LM55 UG Drill (NL)
- 2014 BWS PitPro 360 Portable Screener (NL)
- Cedarapids Crusher (NL)
- 1981 Cedarapids VA-VGF2236 Portable Jaw Crusher (NS)
- 2021 Difco Screening Bucket (NB)
- 2013 Ditch Witch JT30 Directional Drill (AB)
- 1977 Eagle Iron Works Wash Plant (NS)
- 2018 McCloskey C44 EW Cone Crusher (NL)
- 2015 McCloskey D15 Directional Drill (NL)
- 2017 Neuenhauser Starscreen Screening Plant (NB)
- Rodrigue Metal PTO Wood Chipper (NB)
- 2010 Sparta Innovations Ship Loading Conveyor System (NB)
- 2015 Terex TBG640 Horizontal Grinder (PEI)
- 2007 Terex RS425C Wheel Soil Stabilizer (NL)
- Universal 880 Senior Jaw and Roll Conveyor (NB)
- 2012 Williams Hammermill Crusher/Pulverizer (PEI)

*for DUMP TRUCKS, please see pg 8

*for TRAILERS, please see pg 10-11



**2007 LeeBoy L8515T
Asphalt Paver**
Asking \$40,000



**2019 Bomag BW211D
Smooth Drum Compactor**
Asking \$120,000



1997 Dynapac CA151A Vibratory Roller
Asking \$24,500

ASPHALT & PAVING / CONCRETE

- 2017 ADM RB250 Portable Asphalt Plant (NL)
- 2018 Ammann ARX26 Smooth Drum Compactor
- Blaw-Knox Road Widener (NS)
- 2024 Bohringer B-120 Concrete Batch Plant (ON)
- 2019 Bomag BW900-50 Double Drum Roller (NB)
- 2019 Bomag BW211D Smooth Drum Compactor (NB)
- 2014 CAT 140M VHP Plus Motor Grader (NS)
- 2004 CAT CB634D Double Drum Vibratory Roller (NL)
- 2015 Deere 772GP Motor Grader (NL)
- 1997 Dynapac CA151A Smooth Drum Compactor (NL)
- 2008 Ingersoll Rand SD122D Smooth Drum Compactor (2 in NL)
- 2008 Ingersoll Rand DD90HF Smooth Drum Compactor (NL)
- 2014 International Navistar Tack Distributor Truck (PEI)
- 1996 International Paystar 5000 Twinsteer Mixer Truck (NS)
- 2019 LeeBoy 5300 Paver (NB)
- 2007 LeeBoy L8515T Paver (NB)
- 2006 Mack MR688S Concrete Pump Truck (NS)
- 2023 Marathon CR300K Concrete Router (NS)
- Salsco TP411 Track Paver (NL)
- 2015 Simex ST200 Asphalt Layer (NB)
- 2006 Terex/Cedarapids 452 Paver (NB)
- 2007 Volvo VHD Twinsteer Mixer Truck (ON)
- 2004 Volvo VHD Twinsteer Mixer Truck (ON)
- 1999 WRT 120SE35 Portable Asphalt Plant (QC)

New listings are added daily. If you're looking for something not listed here, call Lonnie toll-free at 866-500-1196!

**NEW LISTINGS
EVERY DAY!**

Visit our
website to see
the latest



SALES@EASTERNFRONTIER.CA

TEL. (866) 500-1196



2018 Deere 210G LC Hydraulic Excavator
Asking \$219,000



2006 Komatsu PC600LC-8 Hydraulic Excavator
Asking \$105,000



2017 CAT 323FL Hydraulic Excavator
Asking \$165,000

EXCAVATORS

2012 Case CX250C Long Reach (PEI)

2017 CAT 323FL (NL)

2016 CAT 323FL (NL)

2014 CAT 336EL (NL)

2014 CAT 336E (NL)

2006 CAT 345CL (NS)

2005 CAT 307C (NL)

2024 Deere 75P Mini (ON)

2023 Deere 135G (NB)

2018 Deere 210G LC (2 available in NB)

2017 Deere 50G Mini (NB)

2014 Deere 160G LC (NL)

2008 Deere 450D LC (NB)

2016 Doosan DX225 LC-3 (NB)

2019 Hitachi ZX180 LC-6N (NS)

2012 Hitachi ZX200 LC-3 (NL)

2008 Hitachi 200 LC-3 (BC)

2018 Hyundai HW180 Wheel Excavator (QC)

2022 JCB 8029CTS Mini (NL)

2014 Komatsu PC210 LC-10 (NB)

2006 Komatsu PC600 LC-8 (NS)

2022 Takeuchi TB250-2 Midi (NL)

2023 Volvo EC160 EL (NB)

2017 Volvo ECR145 EL (NS)

2006 Volvo EC460B LC (NL)

+ Various attachments,
call or visit easternfrontier.ca
for details

CALL FOR PRICING

(866) 500-1196



SALES@EASTERNFRONTIER.CA

TEL. (866) 500-1196



**2015 John Deere 772GP
Motor Grader**
Asking \$395,000

MOTOR GRADERS

- 2014 CAT 140M VHP Plus (NS)
- 2011 CAT 140M (NL)
- 2015 Deere 772GP (NL)

+ Various attachments,
call or visit easternfrontier.ca
for details

LOADER BACKHOES

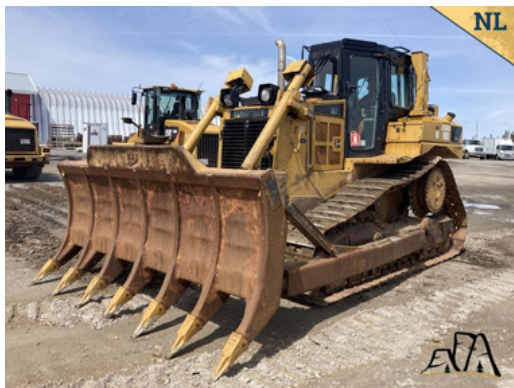
- 2003 CAT 420D (NB)

New Holland LB75B for parts (NL)

WHEEL LOADERS

- 2019 CAT 906M (NB)
- 2013 CAT 950H (NL)
- 1987 CAT 966D (NS)
- 1985 CAT 926 (PEI)
- 1980 Clark 275B (NB)
- 2022 Deere 624P (NL)
- 2012 Deere 624K (NL)
- 2005 Deere 744J (NL)
- 2007 Doosan DL300 (NB)

- 2017 Hitachi ZW140-5B (NL)
- 2018 Hyundai HL965 (NS)
- 2020 Komatsu WA270-8 (NL)
- 1992 Komatsu WA250-1 (NL)
- 2017 Kubota M7-171H (NL)
- 2015 Liebherr L542 (NB)
- 2014 Liebherr L550 (NL)
- 1993 Volvo L50 (NS)



2011 CAT D6T XL Crawler Dozer
Asking \$285,000

DOZERS

- 2011 CAT D6T XL (NL)
- 2004 CAT D5G XL (NB)
- 2004 CAT D4G XL (NB)
- 2002 CAT D4G LGP (NL)
- 2003 Deere 650H LT (NB)

- 1982 Deere 350C (NL)
- Deere 850J/Roto Slasher (NL)
- 2015 Komatsu D65EX-17 (NL)
- 2009 Komatsu D39EX-21 (NB)
- 1992 Komatsu D37P-2 (NL)



**1993 Volvo L50
Wheel Loader**
Asking \$33,000

SKID STEER LOADERS

- 2021 Bobcat S64 (NB)
- 2006 Bobcat MT50 (NB)
- 2012 CAT 279C2 (NL)

- 2007 CAT 272C (NL)
- 2013 Deere 318D (PEI)
- 1999 Thomas 245 HDK (NB)

JOB SITE BUILDINGS

- 2012 GNS Portable 47-Person Industrial Trailer Camp (NL)



SALES@EASTERNFRONTIER.CA TEL. (866) 500-1196



2019 John Deere 1510G Forwarder
Asking \$335,000



2022 Doosan DX225LL Log Loader
Asking \$235,000



1998 Timberjack 1010B Skidder
Asking \$50,000

FORESTRY EQUIPMENT

- 2019 Deere 1510G Forwarder (NS)
- 2018 Deere 1170G Harvester (NB)
- 2016 Deere 2154D Harvester (NL)
- 2016 Deere 1910E Forwarder (NB)
- 2014 Deere 1910E Forwarder (2 in NL)
- 2013 Deere 2154D Harvester (NL)
- 2006 Deere 2054 Harvester (NB)
- 2005 Direct FB-257 Feller Buncher (NS)
- FAE Mulching Heads (2 in NL)
- Forano SB-322 L Debarker (NL)
- 2021 Hakkipilke Falcon 35 Firewood Processor (NS)
- Hawker Siddeley C6D Skidder (2 in NL)
- 2017 Landrich LR-HV Harvester (NB)
- 2015 Power Traxx 10S-HF Flatdeck Muskeg (NL)
- 1999 Pro Pac 600 Towable Wood Slasher (NB)
- 2023 Raytree REDM50 Excavator Mulcher (NB)
- 2014 Rotobec Elite Log Loader (NB)
- 1998 Timberjack 1010B Skidder (PEI)
- 1983 Tree Farmer C6D Cable Skidder (NB)
- 2018 Log Max 6000B Harvester Head (NB)
- 2016 Waratah 616 Harvester Head (NL)
- 2006 Waratah HTH622B Harvester Head (NB)
- Bobcat SG60 Stump Grinder (PEI)

LOGGING TRAILERS

- 2016 BWS 46' Q/A
- 2011 Manac 48' Q/A (PEI)
- 2011 Manac 53' Tri/A Walking Floor Chipper Trailer (PEI)
- 2021 Temisko 49' Q/A (NB)
- 2018 Temisko 49' Q/A (NB)

For other trailers, please see pg 10-11

LOOKING FOR SOMETHING ELSE? WE CAN SOURCE NEARLY ANYTHING.
CALL LONNIE 866-500-1196 or email SALES@EASTERNFRONTIER.CA



**2014 International ProStar+ Eagle
Sleeper Truck**
\$27,900



**2025 Kenworth W990
Sleeper Truck**
\$239,500 (1 of 2 available)



**1991 Kenworth Limited Edition T/A
Sleeper Truck**
Asking \$19,900

TRUCK TRACTORS

- 2016 Freightliner Cascadia 125 T/A Day Cab (NS)
- 2014 Freightliner Columbia 120 T/A Sleeper (PEI)
- 2010 Freightliner Cascadia T/A Sleeper (NB)
- 1993 Freightliner FLA Cab-Over Sleeper (NS)
- 2017 International ProStar 122 T/A Day Cab (NS)
- 2017 International ProStar Sleeper Truck FOR PARTS (NL)
- 2014 International ProStar+ Eagle T/A Sleeper Truck (NS)
- 2013 International Durastar 4300 Flatbed Rolloff (NL)
- 2007 International 9400 Eagle T/A Sleeper (PEI)
- 2006 International 9900i T/A Sleeper (NL)
- 1999 International 2674 T/A Hooklift (NS)
- 2025 Kenworth W990 T/A Sleeper (NB)
- 2019 Kenworth W900L T/A Sleeper (NS)
- 2016 Kenworth W900L T/A Sleeper (NS)
- 2015 Kenworth W900 T/A Sleeper (NL)
- 1999 Kenworth C550 Tandem Tandem Bed Truck (NB)
- 1991 Kenworth Limited Edition T/A Sleeper Truck (NL)
- 2016 Mack CXU613 T/A Sleeper (NL)
- 2012 Mack CXU613 T/A Day Cab (PEI)
- 2011 Mack CXU613 T/A Sleeper (PEI)
- 1980 Pacific Tandem Tandem Bed Truck (NB)
- 2021 Peterbilt 389 T/A Sleeper (NS)
- 2020 Peterbilt 389 T/A Sleeper (2 in NS)
- 2013 Peterbilt 386 T/A Day Cab (PEI)
- 2013 Peterbilt 386 T/A Sleeper + Parts Truck (NL)
- 2004 Sterling L9500 T/A Day Cab (NB)
- 2013 Volvo VNL T/A Sleeper (NL)
- 2022 Western Star 4900EX Sleeper (NS)
- 2015 Western Star 4900EX Sleeper (NS)
- 2014 Western Star 4900EX Sleeper (NS)
- 2013 Western Star 4900SA T/A Sleeper (NS)
- 2013 Western Star 4900SB T/A Sleeper (NL)
- 2012 Western Star 4900 T/A Day Cab (NS)
- 2006 Western Star 4900 T/A Sleeper (NL)

FOR PRICING, call 866-500-1196 or visit EASTERNFRONTIER.CA



**2002 CAT 777D
Rock Truck**
Asking \$77,500

DUMP TRUCKS

- 2002 CAT 777D Rock Truck (NS)
- 2012 Doosan DA30 Articulating Dump Truck (NB)
- 2000 Ford F550 S/A Dump Truck (NB)
- 2000 Ford F450 SD Dump Truck (NB)
- 2013 Freightliner 114SD T/A (NL)
- 2004 GMC Topkick C7500 S/A (NL)
- 2019 International HX620 Dump/Plow/Spreader Truck (NB)
- 2004 International 7400 S/A (NS)
- 1990 International 4700 S/A (NB)
- 1995 Mack RB688S T/A (NL)
- 1989 Mack DM690S T/A (2 in NL)
- 1986 Mack DM686S T/A (NL)



**1990 International 4700
S/A Dump Truck**
Asking \$15,000

PLOW & SPREADER TRUCKS

- 2016 Dodge Ram 2500 4X4 (PEI)
- 2009 Freightliner M2 112 T/A (NB)
- 1997 Volvo WG42 S/A (NB)
- 2013 Western Star 4700SB (NL)

MORE SNOW EQUIPMENT

- 2005 Holder C978H Sidewalk Snow Blower (QC)
- 2002 Snocrete 8' Snow Blower Attachment (NL)
- Loader-Mount Snow Blower Attachment (PEI)
- Victory SP-220 86" Front Mount Snow Plow (NB)
- 1996 Horst SSB96 Side Discharge Sand Bucket (PEI)



**1989 Mack DM690S
T/A Dump Truck**
Asking \$21,500 (1 of 3 available)

CALL FOR PRICING
(866) 500-1196



SALES@EASTERNFRONTIER.CA

TEL. (866) 500-1196



**2009 Grove RT880E
Rough Terrain Crane**
Asking \$300,000

CRANES & LIFTS

- 2013 Genie GS5390RT Scissor Lift (NL)
- 2009 Grove RT880E Rough Terrain Crane (NB)
- 2014 JCB 550-170 Telehandler (NB)
- 2013 JLG 600AJ Articulating Boom Lift (NL)
- 2009 Klimer K Line Twin Mast Work Platform (NB)
- 2014 Liebherr L550 Loader/Forklift (NL)



**2004 International 7600
Boom Truck**
\$70,000

BOOM TRUCKS / BUCKET TRUCKS

- 2009 Altec DM45TR Digger Derrick (NB)
- 2006 Freightliner M2 106 / National N65A (NB)
- 1999 Freightliner FL112 / Pioneer 30t Boom Truck (NL)
- 2008 International Durastar 4400 / Posi-Plus 400-46A (PEI)
- 2007 International Durastar 4300 / Altec Digger Derrick (NL)
- 2004 International Durastar 4400 / Posi-Plus 194-42C (NB)
- 2004 International 7600 Boom Truck (NL)
- 2006 Sterling L90 / HIAB 300-5 (NL)
- 2001 Sterling Lift Truck / 2015 UniLift TAL57000C (PEI)

OTHER VEHICLES

- 2006 Chevy Express Van Truck (NL)
- 2017 Dodge Ram 3500HD Flatbed Truck (NS)
- 2012 Dodge Ram 5500HD Hooklift Rolloff (NL)
- 2020 Fat Truck 2.8C Off-Road Amphibious Vehicle (NL)
- 2018 Ford E450 Econoline Super Duty Van Truck (NL)
- 2013 Ford F350 4x4 Service Truck (NB)
- 2006 Ford F350 Mechanics Truck (PEI)
- 2017 Freightliner FM2 Rolloff Truck (PEI)
- 2006 GMC 3500 Flatbed Utility Truck (NB)
- 2000 GMC C7500 Flatbed Fuel Truck (NL)
- 2016 Hino 195 Cab Over Van Truck (PEI)
- 2010 Hino 185 Box Truck (NS)
- 2014 International Navistar Tack Distributor Truck (PEI)
- 2014 International 7400 Packer Garbage Truck (NB)
- 2013 International Durastar 4300 Utility Dump Truck (NB)
- 2009 International Durastar 4300 Reefer Truck (NL)
- 2009 International Navistar 4100 Flatbed Truck (NL)
- 2007 International 4400 Roll-Back Tow Truck (NS)
- 2005 International 4300 Water Truck (NL)
- 1997 International 4700 Water Truck (NL)
- 2017 Isuzu NPR HD / SuperVac Gale Force Vacuum Truck (NL)
- 2017 KCP Concrete Pumper Truck (NB)
- 1950 Mercury Pickup Truck (NB)
- 1997 Rosenbauer HME Fire Truck (NB)



**2007 International 4400
Roll-Back Tow Truck**
Asking \$23,000

*for DUMP TRUCKS, see pg 8
*for TRUCK TRACTORS, pg 7



2005 Scheltema Tri/A Detachable Lowboy Trailer
Asking \$75,000



2022 Maxi-Roule Cobra T/A Gooseneck Trailer
Asking \$47,500



2010 Transcraft Eagle 48' Tri/A Highboy Trailer
Asking \$23,000

TRAILERS

- 2010 ABS RC231 30' T/A Live Bottom Trailer (NL)
- 1987 Arne's 50-Ton Tri/A Scissor Neck Lowboy Trailer (NS)
- 2021 Big Tex 14LP Heavy Duty T/A Dump Trailer (NL)
- 2007 BWS 50-Ton Scissor Neck Float Trailer (NB)
- 1991 BWS Cable Reel Trailers (2 in NB)
- 1989 Cobra 27' T/A End Dump Trailer (NB)
- 1987 Cobra 30' Tri/A Semi Dump Trailer (NL)
- 1998 Etnyre 26' Tri/A Lowboy Trailer (NB)
- 2023 Gincor 53' Tri/A Drop Deck Trailer (3 in NL)
- 2007 Great Dane 53' T/A Reefer Trailer (PEI)
- 2005 Great Dane 53' T/A Reefer Trailer (PEI)
- 1998 JC Trailers 10-ton T/A Tag Trailer (NB)
- 2015 JM Chantal PT24-3E Roll-off Trailer (NS)
- 2000 Larochelle 27' T/A End Dump Trailer (NB)
- 2023 Load Trail Tri/A Gooseneck Trailer (PEI)
- 2013 Load Trail Heavy Duty T/A Dump Trailer (PEI)
- 1987 Lode King 40' Tri/A Lowboy Trailer (PEI)
- 2020 LWL 20' T/A Tilt Deck Trailer (NB)
- 2022 Manac 53' Tri/A Highboy Trailer (NL)
- 2022 Manac B-Train Highboy Trailer (NL)
- 1988 Manac 48' Tri/A Flatbed Trailer (NS)
- 2009 Max Atlas Tri/A Container Chassis (PEI)
- 2007 Max Atlas 48' Tri/A Container Chassis (PEI)
- 2005 Max Atlas Tri/A Container Chassis (2 in PEI)
- 2004 Max Atlas Tri/A Container Chassis (2 in PEI)
- 2003 Max Atlas Tri/A Container Chassis (2 in PEI)
- 1993 Max Atlas 48' T/A Container Chassis (PEI)
- 2022 Maxi-Roule Cobra T/A Gooseneck (NL)
- 1998 Mond 53' T/A Dry Van Trailer (NS)
- 1998 Mond 48' Tri/A Container Chassis (PEI)

see more trailers on next page...
for LOGGING trailers, see the Forestry section, pg. 6



2023 Gincor 53' Tri/A Drop Deck Trailer
Asking \$85,000

MORE TRAILERS

- 1996 Raglan 37' Tri/A End Dump Trailer (NB)
- 2005 Scheltema Tri/A Detachable Lowboy (NS)
- 2017 Snake River Gooseneck Trailer (NL)
- 2005 Stoughton 48' Tri/A Container Chassis (PEI)
- 2009 Trail King 30' T/A Live Bottom Trailer (NL)
- 2010 Transcraft Eagle 48' Tri/A Highboy Trailer (NB)
- 2020 Trout River 48' Q/A Live Bottom Trailer (NL)
- 2020 Trout River 39' Tri/A Live Bottom Trailer (NL)
- 2010 Trout River 39' Tri/A Live Bottom Trailer (PEI)
- 2009 Trout River 39' Tri/A Live Bottom Trailer (NS)
- 2007 Trout River 39' Tri/A Live Bottom Trailer (PEI)



2018 Log Max 6000B Harvester Head
Asking \$69,500

ATTACHMENTS

- Craig 10' Hydraulic Snow Blade (NL)
- Craig 12' Hydraulic Snow Blade (NL)
- Metal Pless 12' Hydraulic Snow Blade (NL)
- Unused 2022 72" Brush Rake Attachment (NB)
- Unused 2022 Bobcat 84" Blade (NB)
- 2021 Difco Screening Bucket (NB)
- FAE Mulching Heads (2 in NL)
- 2012 Allied AMS-30 Hydraulic Rotational Shear (NL)
- 1996 Horst SSB96 Side Discharge Sand Bucket (PEI)
- 55' Long Reach Boom/Stick
- Long Reach Boom/Stick Assembly (NL)
- Martach C15000NH Winch Attachment (PEI)
- 2021 Bobcat 6' Hydraulic Sweeper (NB)
- Quick Attach 86" Sweeper Broom Attachment (NB)
- 2023 Raytree REDM50 Excavator Mulcher (NB)
- 2020 Topa T-1600N Hydraulic Hammer (NL)



Equifab Stainless Steel Salt Spreader Box
Asking \$1,000

FINANCING AVAILABLE

Call or email for more info



PLEASE CALL FOR PRICING & MORE INFO

TEL. (866) 500-1196



**1998 Valmar 500 Pull-Type
Fertilizer Spreader**
Asking \$8,000



**2009 Pottinger SERVO 6.50
Nova Plus 6 Furrow Plough**
Asking \$19,500



**2006 Bomar 820 Extended
Horizontal Band Saw**
Asking \$45,000

AGRICULTURE EQUIPMENT

- 2022 72" Brush Rake Attachment (NB)
- 2001 Asa Lift SP200 Carrot Harvester (PEI)
- Bobcat SG60 Stump Grinder (PEI)
- 2009 Flottweg High Performance Decanter (PEI)
- 1950 Ford 871 2WD Tractor (NB)
- 2018 Moro Aratri MVP 26A Warrior Plough (NS)
- 2009 Pottinger SERVO 6.50 Nova Plus 6 Furrow Plough (NS)
- 2023 Raytree REDM50 Excavator Mulcher (NB)
- Rodrigue Metal PTO Wood Chipper (NB)
- Seed Conveyor (NB)
- 2012 Struik 4-Row Power Hiller (PEI)
- Tardiff TV1118 Land Leveller (NL)
- 1998 Valmar 500 Pull-Type Fertilizer Spreader (PEI)

OTHER EQUIPMENT

- 24" Track Pads to fit Volvo 160 Excavator (NB)
- 31" Tracks to fit CAT 320 (NL)
- 2023 Marathon CR300K Concrete Router (NB)
- Melroe Ingersoll Rand LT304 Trencher (PEI)
- 2010 AB Skid Mounted Generator (NL)
- 2006 Bomar 820 Extended Horizontal Band Saw (QC)
- 1998 Generac 100kW Generator (NB)
- Onan 15JC 15.0 Propane Gas Generator (NB)
- 2005 Ingersoll Rand SSR-HP400 Compressor (NS)
- Blue Giant HA6008-50 Dock Levellers (NB)
- 2015 Dragflow HY35A Dredge Pump (NS)
- 2020 Topa T-1600N Hydraulic Hammer (NL)
- 2013 Ditch Witch JT30 Directional Drill (AB)
- 2015 McCloskey D15 Directional Drill (NL)
- 2013 Atlas Copco Diamec U4 Drill (NL)
- 2007 Boart Longyear LM55 UG Drill (NL)

CALL FOR PRICING
(866) 500-1196



LISTING SPOTLIGHT: 2017 ADM RB250 ASPHALT PLANT

Complete to generators, quad-axle portability with hydraulic legs, 10x20' control room

- RB250 Wet Plant, quad-axle air portability with hydraulic legs
- 10'x20' Control Room, reverse weigh, auto damper, MCC in Control Room
- 4CFB20 Bins, tri-axle, adjustable legs with full length sand shoes, bulkhead with wing walls, 4 bun vibrators, 4 no flow switches, tach feed back
- Weigh conveyor, 24" belt and pintow hitch, 3'x8' screen
- Electric cone heat, electric gate heat, DC300, chrome, grease bank, tri-axle, 15 HP air compressor
- 30000g HOH tank, polymer agitation system, tri-axle, adjustable legs with full length sand shoes, 4" transfer pump, hose package, 4" of insulation jacketed fill line
- List of upgrades and special items upon request
- 2016 C18 Genset (545kw @ 600V), 2020 D60 genset generators

Very good condition, still in operation. Will be dismantled, cleaned and ready for shipping.

Located in Newfoundland. See more pics at www.easternfrontier.ca



Asking \$1,950,000 CAD

Please call Harold at 709-690-4485 or email sales@easternfrontier.ca for more information.



SHIPPING ASSETS



HOW EASTERN FRONTIER CAN HELP

Eastern Frontier does not directly provide shipping services. However, we can recommend vetted companies familiar with our location, terrain, and our expectation to make every transaction as smooth as possible. Whether shipping regionally, nationally, or internationally, they are familiar with the process and have the answers to your questions. For our international customers please note the Custom Broker Service section on this page, where you can find selected companies that will look after all the paperwork required for US border crossings. For a quote, request the following information below from our sales team, which will get you one step further towards having your purchase in your possession as quickly as possible.

INFORMATION FOR THE SHIPPING COMPANY

- Origin (include city/country/area code);
- Destination (include city/country/area code);
- Pick-up date (including whether an appointment is needed to pick up or deliver, hours of operation);
- Type of equipment (ex., dry van, refrigerated, flatbed, RGN, etc.);
- Commodity type;
- Approximate weight and volume.

Questions? Your EFA sales rep has answers.

FINANCING AVAILABLE

email sales@easternfrontier.ca for info

Trustworthy Shippers

NEWFOUNDLAND

Riverbend Transportation
709-427-5570
Double G Trucking Ltd.
709-632-8183
Anytime Heavy Haul
709-685-3003

NOVA SCOTIA

JNB Heavy Haul
902-221-0903
S & M Trucking
902-567-1466
Atlantic Tiltload Ltd.
902-468-9438

NEW BRUNSWICK

Atlantic Pacific Transport
800-561-0049

PEI

Griffen Towing
902-629-0747

USA

Reed TMS Logistics
786-310-2007 ext. 2108
Great Lake Logistics
519-330-2850

MARINE FLEET

Oceanex 888-875-9595

US Custom Broker Services

Southbound Shipments
dleye@mantoria.com
514-488-4004 ext.317

Eric Young
Licensed Custom Broker
518-314-0224

Border Buddy (borderbuddy.com)
855-275-1100



**EASTERN
FRONTIER
AUCTIONS**

EQUIPMENT FOR SALE

ATLANTIC CANADA - MAR 2025 - ALL PRICES CAD

NEW LISTING SPOTLIGHT: 47-PERSON INDUSTRIAL TRAILER CAMP

2012 G.N.S. INDUSTRIAL TRAILER SERVICES

47-person work site trailer camp.

Includes:

8 units, 12' x 56'. See main floor plan below.

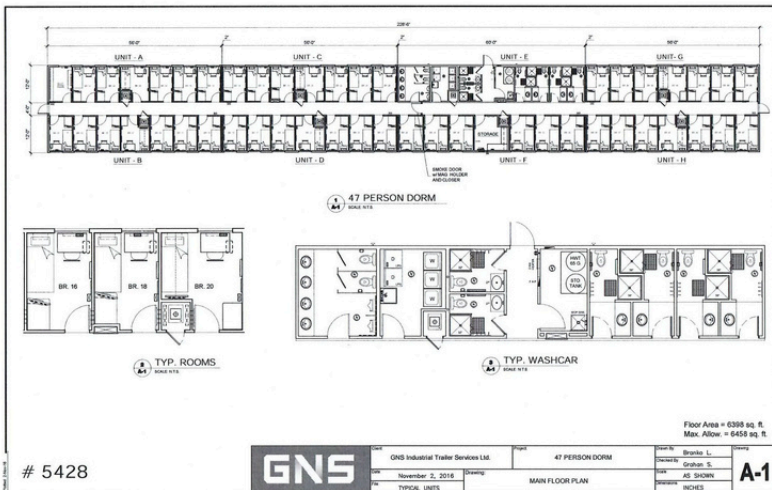
6 rooms per trailer unit.

Laundry facilities and washrooms in each unit.

Located in Newfoundland, ready to ship.

MORE INFO: call Lonnie at 866-500-1196 or email sales@easternfrontier.ca

Asking \$625,000 CAD



For details, offers and more,
contact **Eastern Frontier:**

Harold Druken (Newfoundland & Labrador)

709-690-4485

hdruken@easternfrontier.ca

Jody Smallman (Nova Scotia / New Brunswick)

902-890-9694

jsmallman@easternfrontier.ca

Lonnie Thompson (Prince Edward Island)

902-393-6196

lthompson@easternfrontier.ca



EASTERN FRONTIER AUCTIONS

CANADA'S HEAVY EQUIPMENT SPECIALISTS



NEWFOUNDLAND & LABRADOR

John Adams
President / CEO
jadams@easternfrontier.ca



NEWFOUNDLAND & LABRADOR

Harold Druken
VP Sales
709-690-4485
hdruken@easternfrontier.ca



NOVA SCOTIA & NEW BRUNSWICK

Jody Smallman
902-890-9694
jsmallman@easternfrontier.ca



PRINCE EDWARD ISLAND

Lonnie Thompson
902-393-6196
lthompson@easternfrontier.ca



WESTERN CANADA

Bill Carew
587-989-6466
bcarew@easternfrontier.ca



WESTERN CANADA

Ashley Mackenzie
780-399-8218
amackenzie@easternfrontier.ca

EASTERNFRONTIER.CA